

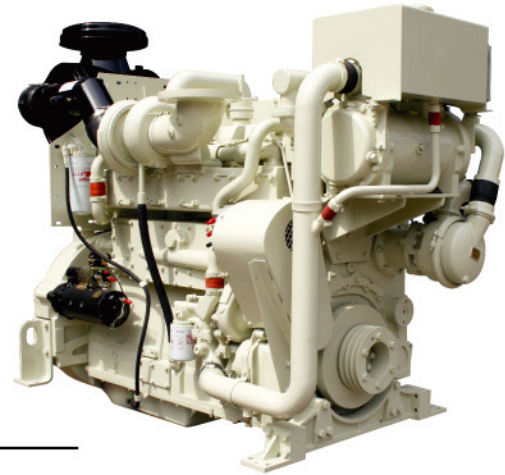
# KT19-M



## MARINE PROPULSION 425HP

### ENGINE SPECIFICATIONS

Engine Type	In line, 6 Cylinders, 4-Stroke Diesel
Bore & Stroke	159mm X 159mm (6.25 in X 6.24 in)
Displacement	18.9 L (1150 in <sup>3</sup> )
Rotation	Counterclockwise facing flywheel
Compression Ratio	15.5:1
Emissions	IMO



### POWER RATINGS

Power Rating	Continuous Duty
Rated RPM	1800
kW (BHP)	317kW(425HP)
Max Torque (N.m)	1930
(ft-lb)	1423
RPM	1500

### ENGINE FEATURUES

#### Certifications

Emissions compliant to IMO Annex VI of MARPOL 73/78 guidelines. Certifications available from the CCS Register

#### Engine Design

Robust engine block designed for continuous duty operation and long life. Metric O-ring seals and edge molded gaskets eliminate fluid leaks. Full power take-off available from front of crankshaft. Aluminum single-piece piston design with hardened liners and nitride coated rings for exceptional durability

#### Cooling System

Keel cooled or engine mounted heat exchanger system available. Spin-on Cummins water treatment filters for protection against cooling system corrosion

#### Air System

Holset HX80 turbochargers optimized for marine applications

#### Fuel System

Dependable Cummins PT fuel system precise engine fueling. Step Timing Control (STC) allows for smooth engine acceleration under load. Premium fuel injectors utilize ceramic components for increased durability

#### Lubrication System

Marine grade steel or cast aluminum lube oil pan (37 L [9.7 gal]). Cummins spin-on oil filters handed available for simplified service

#### Exhaust System

Water cooled exhaust manifold reduces emissions and cools engine surface temperatures

#### Electrical System

24 volt standard electrical system

### ENGINE DIMENSIONS

	Length		Width		Height		Weight	
	mm	in	mm	in	mm	in	kg	lb
HX	2161.5	85	965	38	1760.5	69.5	2073	4570
KC								

**EVERY™**  
**JOB.**

# KT19-M



## MARINE PROPULSION 425HP

### PERFORMANCE DATA

Power Rating	Continuous Duty 425 hp		
	1800	1600	1400
RPM	1800	1600	1400
kW	317	211	157
g/kW•hr	211	215	220
l/hr	77	53	40.6
bhp	425	283	210
lb/hp•hr	0.340	0.351	0.362
gal/hr	20	14	11

**Rating Definitions:** Ratings are based upon ISO 8665 reference conditions; air pressure of 100 kPa [29.612 in. Hg] air temperature 25°C [77°F] and 30% relative humidity. Power is rated in accordance with IMCI procedures.

**Fuel Consumption:** Based on fuel of 35° API gravity at 16°C [60°F] having LHV of 42,780 kJ/kg [18,390 Btu/lb] and weighing 838.9g/liter [7.001 lb/U.S.gal].

Cummins is a pioneer in product improvement. Thus specifications may change without notice, consult your local Cummins professional for further information.



Chongqing Cummins Engine Co., Ltd  
Add: Lieshimu Shapingba Chongqing 40031 P.R.China  
Tel: 86-23-65335888  
Fax: 86-23-65315379  
[http: www.cummins-cq.com](http://www.cummins-cq.com)  
Chongqing Cummins Hot Line: 86-400-889-9990